

COMO

made in italy  
dress

CURVY

AI 2023

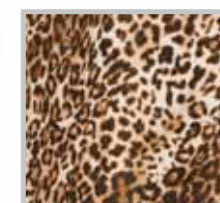




2 3



CAMPIONE



CAMPIONE

**CDW175** - ABITO ANIMALIER DOUBLE - TG. UNICA  
80% POLIESTERE 15% VISCOSA 5% ELASTAM

**CDW176** - GIACCA ANIMALIER DOUBLE - TG. 44 46 48 50 52  
80% POLIESTERE 15% VISCOSA 5% ELASTAM

JACQUARD  
COTONE



CAMPIONE

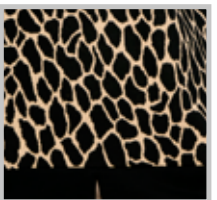
**CDW186** - CASACCA OVER JACQ. LEOPARDO - TG. S M L XL 2XL 3XL

FANTASIA: 51% POLIESTERE 48% COTONE 1% ELASTAM UNITO: 68% VISCOSA 27% POLIAMMIDE 5% ELASTAM



4 5

JACQUARD  
COTONE

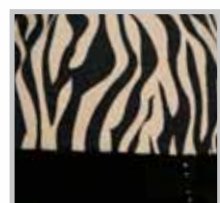


CAMPIONE

**CDW187** - MAGLIA BOTTONE ZEBRA SOFT - TG. S M L XL 2XL 3XL

FANTASIA: 51% POLIESTERE 48% COTONE 1% ELASTAM UNITO: 45% VISCOSA 36% POLIESTERE 19% NYLON

JACQUARD  
COTONE  
SOFT



CAMPIONE

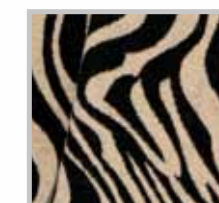
**CDW183** - MAGLIA ZEBRA SOFT - TG. S M L XL XXL

FANTASIA: 53% POLIESTERE 44% COTONE 3% ELASTAM UNITO: 68% VISCOSA 27% POLIAMMIDE 5% ELASTAM



6 7

JACQUARD  
COTONE  
SOFT



CAMPIONE

**CDW182** - MAGLIA BOTTONE ZEBRA SOFT - TG. S M L XL XXL

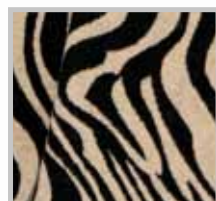
FANTASIA: 53% POLIESTERE 44% COTONE 3% ELASTAM UNITO: 68% VISCOSA 27% POLIAMMIDE 5% ELASTAM

JACQUARD  
COTONE  
SOFT



8

9



CAMPIONE



CAMPIONE

**CDW184** - CAPPOTTINO ZEBRA SOFT - TG. 44 46 48 50 52  
53% POLIESTERE 44% COTONE 3% ELASTAM

**CDW185** - CAPPOTTINO OVER SCOTT T.V. - TG. 44 46 48 50 52 54  
80% POLIESTERE 15% VISCOSA 5% ELASTAM

GEORGETTE  
+  
VISCOSA  
INVERNALE



10 11

GEORGETTE  
+  
VISCOSA  
INVERNALE



CAMPIONE



CAMPIONE

**CDW188** - MAGLIA BOTTONE ZEBRA SOFT - TG. S M L XL XXL  
95% POLIESTERE 5% ELASTAM

**CDW188** - MAGLIA BOTTONE ZEBRA SOFT - TG. S M L XL XXL  
95% POLIESTERE 5% ELASTAM

FELPA  
BIELASTICA  
GARZATA



MILITARE 73 (FOTO)



BLU 88



NERO 99

**CFT21** - PANTALONE FELPA GARZATA - TG. S M L XL 2XL 3XL  
95% COTONE 5% ELASTAM

12 13



MINÙ  
MAGLIA  
SOFT



CASHA



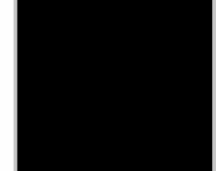
GRIGIO



VERDE DIOR (FOTO)



BLU



NERO

**CFT22** - PANTAPALAZZO MINÙ - TG. 44 46 48 50 52  
45% VISCOSA 36% POLIESTERE 19% NYLON

MINÙ  
MAGLIA  
SOFT



CASHA (FOTO)



GRIGIO

14 15

MINÙ  
MAGLIA  
SOFT



CASHA



GRIGIO (FOTO)

**CFT23** - MAGLIA MINÙ PIED POULE SF. - TG. S M L XL XXL

UNITO: 45% VISCOSA 36% POLIESTERE 19% NYLON FANTASIA: 48% VISCOSA 37% POLIESTERE 18% NYLON

**CFT24** - MAGLIA DOLCEVITA MINÙ PIED POULE SF. - TG. S M L XL XXL

UNITO: 45% VISCOSA 36% POLIESTERE 19% NYLON FANTASIA: 48% VISCOSA 37% POLIESTERE 18% NYLON



MINÙ  
MAGLIA  
SOFT



16 17



CAMPIONE

**CFT25** - MAGLIA MINÙ LUX DOLCEVITA PIED POULE - TG. S M L XL XXL

UNITO: 41% VISCOSA 31% POLIESTERE 18% NYLON 10% ME. FANTASIA 50% VISCOSA 29% POLIESTERE 21% NYLON

MINÙ  
MAGLIA  
SOFT



CAMPIONE

**CFT26** - MAGLIA MINÙ LUX PIED POULE SF. - TG. S M L XL XXL

UNITO: 41% VISCOSA 31% POLIESTERE 18% NYLON 10% ME. FANTASIA 50% VISCOSA 29% POLIESTERE 21% NYLON

MINÙ  
MAGLIA  
SOFT



18 19



MINÙ  
MAGLIA  
SOFT



CICLAMINO (FOTO)



OLIVA



PAVONE



CICLAMINO



PAVONE (FOTO)



NERO

**CFT27** - MAGLIA MINÙ BICOLORE BOTTONE - TG. S M L XL XXL  
45% VISCOSA 36% POLIESTERE 19% NYLON

**CFT28** - MAGLIA MINÙ SCIARPINA DOBBY - TG. S M L XL XXL  
45% VISCOSA 36% POLIESTERE 19% NYLON

MINÙ  
MAGLIA  
SOFT



VERDE DIOR



CICLAMINO



PAVONE (FOTO)



NERO

20

21

MINÙ  
MAGLIA  
SOFT  
+LUX



CASHA 311 (FOTO)



NERO

**CFT29** - MAGLIA MINÙ BOTTONE COLLO - TG. S M L XL XXL  
45% VISCOSA 36% POLIESTERE 19% NYLON

**CFT30** - MAGLIA MINÙ DOUBLE COLLO ASSIM. - TG. S M L XL XXL  
45% VISCOSA 36% POLIESTERE 19% NYLON TESSUTO SEC. 41% VISCOSA 31% POLIESTERE 18% NYLON 10% ME.

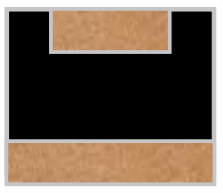
MINÙ  
MAGLIA  
SOFT



CICLAMINO



PAVONE (FOTO)



NERO



22

**CFT31** - MANTELLA MINÙ BICOLOR - TG. UNICA  
45% VISCOSA 36% POLIESTERE 19% NYLON



23



**CFT32** - CAPPA CON CAPPuccio DOUBLE - TG.(S/L) (L/XL)  
80% POLIESTERE 15% VISCOSA 5% ELASTAM



CAMMELLO (FOTO)



CASHA



BLU



24

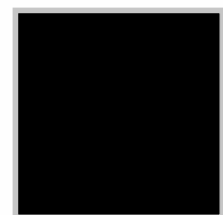
25



CAMMELLO



ANTRACITE (FOTO)



NERO



AZZURRO



CAMMELLO (FOTO)



NERO

**DWW04** - CAPPOTTO BRAIES - Tg. 44 46 48 50 52

75% POLIESTERE 20% VISCOSA 5% ELASTAM

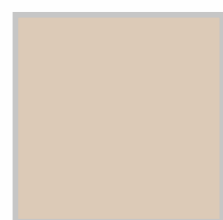
**DWW09** - CAPPOTTO ABBRACCIO - Tg. 44 46 48 50 52

55% POLIESTERE 45% NYLON

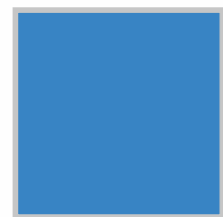


26

27



PANNA



AZZURRO (FOTO)

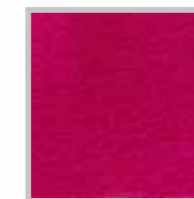


NERO

LANA



CAMMELLO 2002



AZALEA 1413 (FOTO)



CAFFÈ 1496



NERO

**DWW10** - GACCONE CAPPuccio DRAPP - Tg. 44 46 48 50 52  
52% POLIESTERE 44% ACRILICO 4% LANA

**CDJ01** - CAPPOTTO OVERSIZE LANA COTTA - Tg. (S/M) (L/XL)  
56% POLIESTERE 41% LANA VERGINE 3% A.F.

LANA

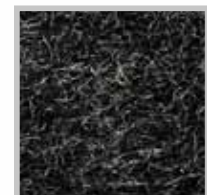


LANA



28

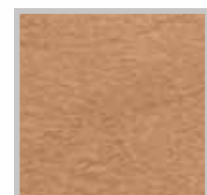
29



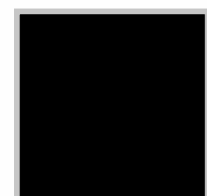
ANTRACITE



VIOLA 1418 (FOTO)



CAMMELLO 2002



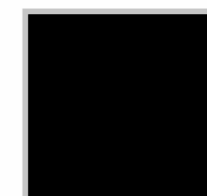
NERO



CAMMELLO 2002 (FOTO)



LIME



NERO

**CDJ02** - GIACCONE LANA COTTA DOLOMITI - Tg. 44 46 48 50 52  
56% POLIESTERE 41% LANA VERGINE 3% A.F.

**CDJ03** - CARDIGAN OVERSIZE LANA COTTA - Tg. (S/M) (L/XL)  
60% LANA VERGINE 40% POLIESTERE

FRISOTTINO  
VISCOSA



30

31



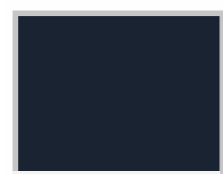
NERO/OFFWHITE (FOTO)



OTTANIO/OFFWHITE



INDIA/OFFWHITE



BLU/OFFWHITE

**MBC28** - MAGLIA CAMICIA TORINO - TG. S M L XL XXL

97% VISCOSA 3% ELASTAM

FRISOTTINO  
VISCOSA  
INVERNALE



INDIA



OTTANIO



NERO (FOTO)

**MBC38** - MAGLIA FRISOTTINO MODELLO FERRONE - TG. S M L XL XXL

97% VISCOSA 3% ELASTAM



FRISOTTINO  
VISCOSA  
INVERNALE

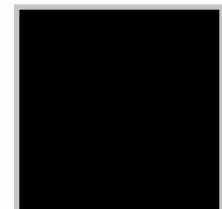


32

33



INDIA (FOTO)



NERO

**MBC39** - MAGLIA FRISOTTINO CATENA - TG. M L XL XXL  
97% VISCOSA 3% ELASTAM

FRISOTTINO  
VISCOSA  
INVERNALE



INDIA



OTTANIO (FOTO)



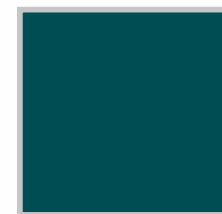
NOTTE



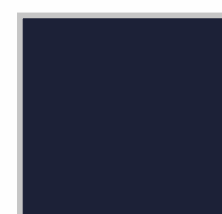
NERO

**MBC41** - MAGLIA FRISOTTINO COLLO REV. - TG. M L XL 2XL 3XL  
97% VISCOSA 3% ELASTAM

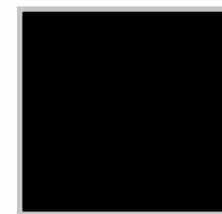
TG. OVER 4X  
FRISOTTINO  
VISCOSA  
INVERNALE



OTTANIO



NOTTE (FOTO)



NERO

34

35



NERO

**MBC40** - MAGLIA FRISOTTINO OVER-PLUS - TG. UNICA OVER 4X  
97% VISCOSA 3% ELASTAM

**MBC36** - MAGLIA COLLO ASSIM. - TG. S M L XL XXL  
86% POLIESTERE 10% VISCOSA 4% ELASTAM

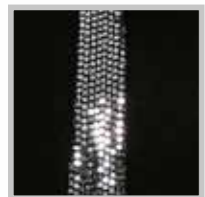
VISCOSA  
SOFT



36 37



VAR.1



VAR.2 (FOTO)

**MBC37** - MAGLIA SOFT + PAILLETES - TG. S M L XL XXL  
77% VISCOSA 20% ACRILICO 3% ELASTAM

VISCOSA  
SOFT



VAR.1 (FOTO)



VAR.2

**MBC37** - MAGLIA SOFT + PAILLETES - TG. S M L XL XXL  
77% VISCOSA 20% ACRILICO 3% ELASTAM

VISCOSA  
SOFT

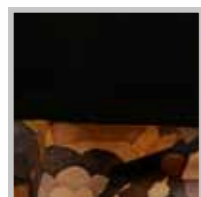


38

39



VISCOSA  
SOFT

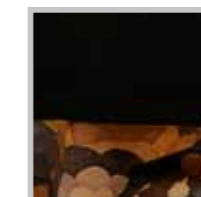


VAR.1

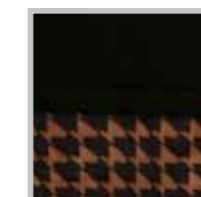


VAR.2 (FOTO)

**CMW138** - CASACCA CINIGLIA SOFT TOUCH - TG. S M L XL XXL  
95% POLISTERE 5% ELASTAM



VAR.1 (FOTO)



VAR.2

**CMW138** - CASACCA CINIGLIA SOFT TOUCH - TG. S M L XL XXL  
FANTASIA: 95% POLISTERE 5% ELASTAM - T.UNITA: 77% VISCOSA 20% ACRILICO 3% ELASTAM

CINIGLIA  
SOFT



40

41



VAR.1 (FOTO)



VAR.2

CINIGLIA  
SOFT



VAR.1



VAR.2 (FOTO)

**CMW137** - CASACCA CINIGLIA DOLCEVITA FANTASY - TG. S M L XL XXL  
95% POLISTERE 5% ELASTAM

**CMW137** - CASACCA CINIGLIA DOLCEVITA FANTASY - TG. S M L XL XXL  
95% POLISTERE 5% ELASTAM

CINIGLIA  
SOFT



INDACO



NERO (FOTO)

**CMW139** - CASACCA CINIGLIA SOFT TOUCH - TG. 44 46 48 50 52

94% POLIESTERE 6% ELASTAM



42

43



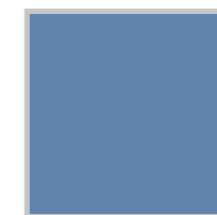
PUNTO  
MILANO



OLIO



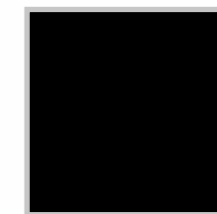
PANNA



AVIO



FUXIA (FOTO)



NERO

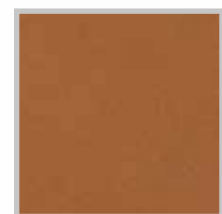
**MPM01** - MAGLIA PUNTO MILANO COLLO BOTT. - TG. S M L XL 2XL 3XL

65% VISCOSA 30% NYLON 5% ELASTAM

PUNTO  
MILANO



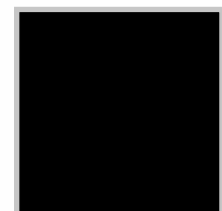
44 45



CAMMELLO



AVIO (FOTO)



NERO

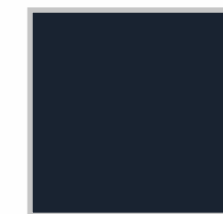
PUNTO  
MILANO



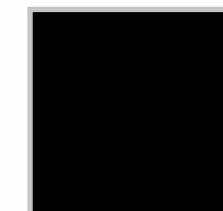
VERDE (FOTO)



INDIA



BLU



NERO

**MPM02** - MAGLIA PUNTO MILANO OVER TASCA - TG. S M L XL XXL

65% VISCOSA 30% NYLON 5% ELASTAM

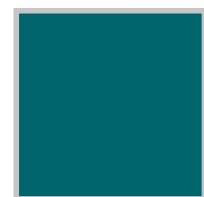
**MPM03** - MAGLIA PUNTO MILANO OVER ASSIM. - TG. S M L XL XXL

65% VISCOSA 30% NYLON 5% ELASTAM

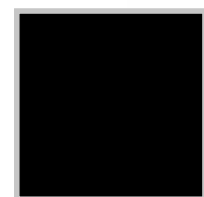
PUNTO  
MILANO



CICLAMINO



PAVONE (FOTO)



NERO

**MPM04** - PANTALONE OVER PUNTO MILANO - TG. 44 46 48 50 52

65% VISCOSA 32% NYLON 3% ELASTAM

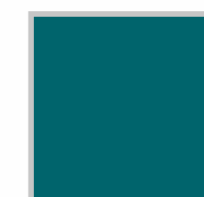
46

47

PUNTO  
MILANO



CICLAMINO



PAVONE (FOTO)



NERO

**MPM05** - GIACCA OVER PUNTO MILANO - TG. 44 46 48 50 52

65% VISCOSA 32% NYLON 3% ELASTAM



RASO  
STRETCH



RASO  
STRETCH



BRONZÈ 3084 (FOTO)



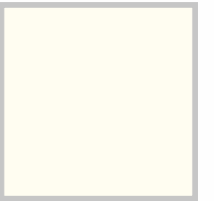
CICLAMINO 1558



NERO

48

49



OFF WHITE 3013



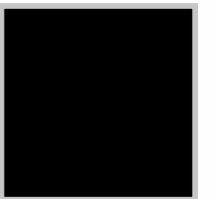
NUDE3243



BRONZÈ 3084



CICLAMINO 1558 (FOTO)



NERO

**CMW133** - CASACCA RASO STRETCH - TG. S M L XL XXL  
97% POLIESTERE 3% ELASTAM

**CMW134** - CAMICIA RASO STRETCH - TG. S M L XL XXL  
97% POLIESTERE 3% ELASTAM

100% TWILL  
VISCOSA



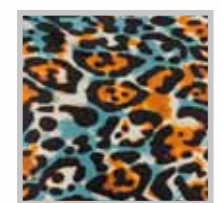
50 51



VAR.1 (FOTO)



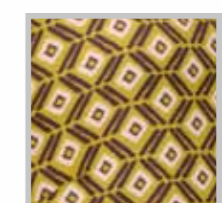
VAR.2



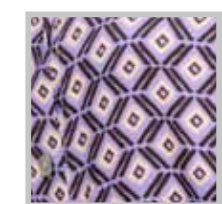
VAR.3 (ANIMALIER)

**CMW135** - CASACCA VISCOSA TWILL GEO - TG. S M L XL XXL  
100% VISCOSA

100% TWILL  
VISCOSA



VAR.1



VAR.2 (FOTO)

**CMW136** - CAMICIA VISCOSA TWILL GEO - TG. S M L XL XXL  
100% VISCOSA

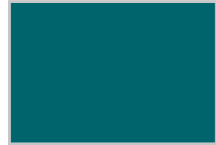
**BASIC**



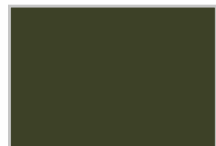
CAMMELLO



INCHIOSTRO



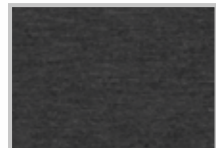
PAVONE



MILITARE



MARRONE



ANTRACITE M. (FOTO)



BLU



NERO



**PUNTO  
MILANO**

VESTIBILITÀ  
COMFORT  
ELASTICO  
IN VITA

**52**

**PUNTO  
MILANO**

VESTIBILITÀ  
COMFORT  
ELASTICO  
IN VITA

**53**



VERDE DIOR



CICLAMINO 1558 (FOTO)



BRUCIATO



ANTRACITE M.



BLU



NERO



**CDP10** - PANTALONE PUNTO MILANO - Tg. 44 46 48 50 52 54

65% VICOSA 32% NYLON 3% ELASTAM

**CDP25** - PANTALONE PUNTO MILANO CITY - TG. 44 46 48 50 52 54

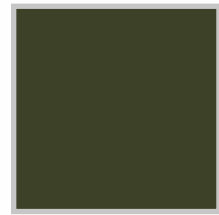
97% POLIESTERE 3% ELASTAM



**PUNTO  
MILANO**

VESTIBILITÀ  
COMFORT  
ELASTICO  
IN VITA

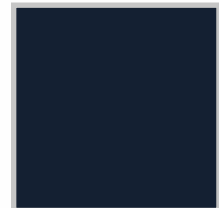
**54**



MILITARE



CAMMELLO (FOTO)



BLU



NERO

**CDP52** - PANTALONE PUNTO MILANO BOTTONI - TG. 44 46 48 50 52 54

65% VISCOSA 32% NYLON 3% ELASTAM

**PUNTO  
MILANO**

VESTIBILITÀ  
COMFORT  
ELASTICO  
IN VITA

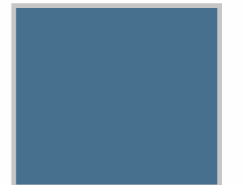
**55**



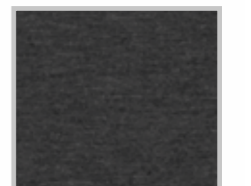
MOSTO



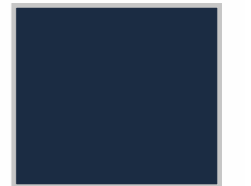
MILITARE



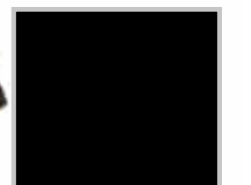
AVIO (FOTO)



ANTRACITE M.



BLU



NERO

**CDP53** - PANTALONE PUNTO MILANO TASCA - TG. 44 46 48 50 52 54

65% VISCOSA 32% NYLON 3% ELASTAM



**PUNTO  
MILANO  
DIAGONAL**

VESTIBILITÀ  
COMFORT  
ELASTICO  
IN VITA

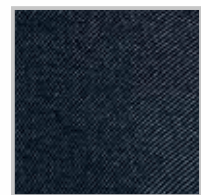
**56**

**57**



**PUNTO  
MILANO  
TRICOTTINA**

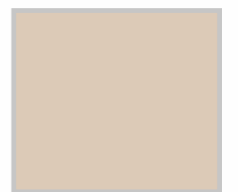
VESTIBILITÀ  
COMFORT  
ELASTICO  
IN VITA



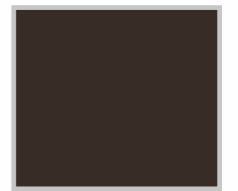
BLU



NERO (FOTO)



PANNA 13



MARRONE 59 (FOTO)



NERO 99

**CDP63** - PANTALONE PUNTO MILANO DIAG. - TG. 44 46 48 50 52 54

65% VISCOSA 29% POLIESTERE 4% ELASTAM

**CDP68** - PANTALONE PUNTO MILANO TRICOTTINA - TG. 44 46 48 50 52 54

71% VISCOSA 25% POLIAMMIDE 4% ELASTAM

PANTALONE  
CLASSICO  
CON PATTA  
E TASCHE

**JEANS  
COTONE**

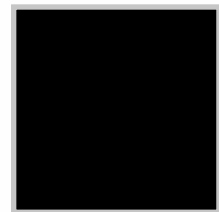
VESTIBILITÀ  
COMFORT  
ELASTICO  
IN VITA

58

59



CICLAMINO (FOTO)



NERO



**CDP69** - PANTALONE golden crepe tasca - TG. 44 46 48 50 52  
83% POLIESTRE 13% VISCOSA 4% ELSTAM



BLU (FOTO)



VERDE



**CDP65** - PANTALONE JEANS - TG. 44 46 48 50 52  
70% COTONE 27% POLIESTERE 35% ELASTAM

VESTIBILITÀ  
COMFORT  
ELASTICO  
IN VITA

VESTIBILITÀ  
COMFORT  
ELASTICO  
IN VITA



CAMMELLO 557



PAVONE



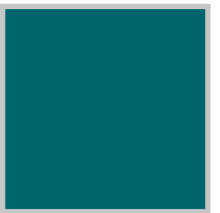
CICLAMINO (FOTO)



BLU



NERO



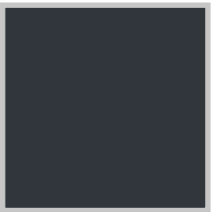
PAVONE



TOFFEE



CAMMELLO



BLU (FOTO)



NERO

60

61



**CDP37** - PANTALONE CROPPED URBAN TWILL - TG. 44 46 48 50 52  
97% POLIESTERE 3% ELASTAM



**CDP27** - PANTALONE CADÌ - TG. 44 46 48 50 52 54  
97% POLIESTERE 3% ELASTAM



**SOFT  
QUALITY**

VESTIBILITÀ  
COMFORT  
ELASTICO  
IN VITA

**62**

**SOFT  
QUALITY**

VESTIBILITÀ  
COMFORT  
ELASTICO  
IN VITA

**63**



SENAPE



OLIVA (FOTO)



CICLAMINO



CAFFÈ



NERO



PANNA



CAMMELLO



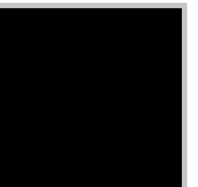
BRUCIATO



MILITARE (FOTO)



CAFFÈ



NERO

**CDP64** - PANTALONE WINTER KING - TG. 44 46 48 50 52 54

97% POLIESTERE 3% ELASTAM

**CDP58** - PANTALONE WHINTER KING - TG. 44 46 48 50 52 54

97% POLIESTERE 5% ELASTAM





**JACQUARD  
COTONE**

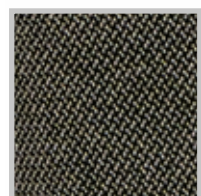
VESTIBILITÀ  
COMFORT  
ELASTICO  
IN VITA

64

65

**JACQUARD  
COTONE**

VESTIBILITÀ  
COMFORT  
ELASTICO  
IN VITA



VAR.A (FOTO)



VAR.B



VAR.A



VAR.B (FOTO)

**CDP61** - PANTALONE TASCA JACQUARD GIOTTO - TG. 44 46 48 50 52 54

57% POLIESTERE 42% COTONE 1% ELASTAM

**CDP62** - PANTALONE JACQUARD GIOTTO - TG. 44 46 48 50 52 54

57% POLIESTERE 42% COTONE 1% ELASTAM



**JACQUARD  
COTONE**

VESTIBILITÀ  
COMFORT  
ELASTICO  
IN VITA

**66**

**JACQUARD  
COTONE**

VESTIBILITÀ  
COMFORT  
ELASTICO  
IN VITA

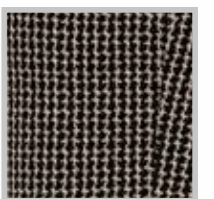
**67**



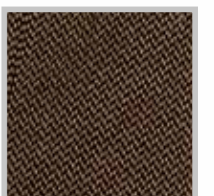
VAR.C (FOTO)



VAR.D



VAR.C



VAR.D (FOTO)

**CDP66** - PANTALONE JACQUARD RISVOLTO - TG. 44 46 48 50 52  
57% POLIESTERE 42% COTONE 1% ELASTAM

**CDP66** - PANTALONE JACQUARD RISVOLTO - TG. 44 46 48 50 52  
57% POLIESTERE 42% COTONE 1% ELASTAM



JACQUARD  
COTONE

VESTIBILITÀ  
COMFORT  
ELASTICO  
IN VITA

68

JACQUARD  
COTONE

VESTIBILITÀ  
COMFORT  
ELASTICO  
IN VITA

69



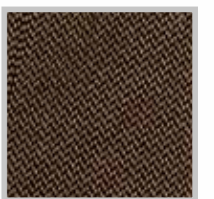
VAR.C (FOTO)



VAR.D



VAR.C



VAR.D (FOTO)

**BENGALINA  
INVERNALE**

VESTIBILITÀ  
COMFORT  
ELASTICO  
IN VITA

**70**



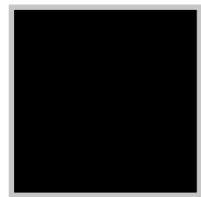
CASHA



MILITARE



CAFFÈ (FOTO)



NERO



**CDP59** - PANTALONE BENGALINA INVERNALE - TG. 44 46 48 50 52 54

73% VISCOSA 20% NYLON 7% ELASTAM

tessil**group** s.r.l.

Via C.Colombo, 3  
22069 ROVELLASCA  
tel. 02 96740138  
fax 02 96740070  
info@tessilgroup.it  
www.tessilgroup.it