

**EVOE**

made in italy



**MAGLIERIA  
& ACCESSORI**

**AI 2021**

LANA  
CASHMERE

EVOE  
made in Italy



1



Sale



Grigio Ch.



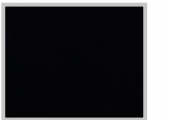
Renna



Bosco



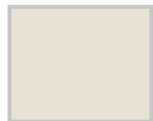
Fuoco



Nero

**EWM185** - MAGLIA SORRISO LANA CASHMERE - Tg. S-M-L-XL

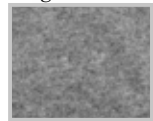
90% lana vergine 10% cashmere



Sale (foto)



Grigio Ch.



Grigio medio



Renna



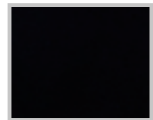
Cuoio



Aragosta



Blu



Nero



LANA  
CASHMERE

OVERSIZE

2

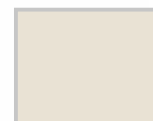
LANA  
CASHMERE

OVERSIZE

3



Aragosta



Sale



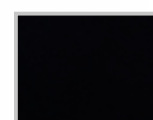
Grigio Ch.



Cuoio (foto)



Blu



Nero

**EWM201** - MAGLIA ASIMMETRICA LANA CASHMERE - Tg. UNICA

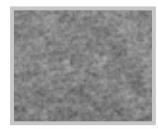
90% lana vergine 10% cashmere

**EWM212** - MAGLIA SCATOLETTA LANA CASHMERE - Tg. S-M-L-XL

90% lana vergine 10% cashmere

LANA  
CASHMERE

LANA  
CASHMERE



Grigio medio



Sale



Cielo



Renna



Bosco



Fuoco (foto)



Nero



4

5



Cielo



Sale



Grigio Ch. (foto)



Renna



Fuoco



Nero

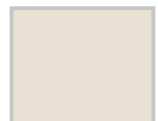
**EWM213** - MAGLIA DOLCEVITA LANA CASHMERE - Tg. S-M-L-XL  
90% lana vergine 10% cashmere

**EWM246** - MAGLIA SCOLLO "V" LANA CASHMERE - Tg. S-M-L-XL  
90% lana vergine 10% cashmere

LANA  
CASHMERE

LANA  
CASHMERE

OVERSIZE



Sale (foto)



Renna



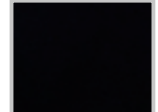
Verde Gucci



Aragosta



Blu



Nero

6

7



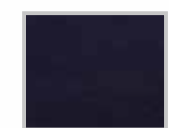
Sale



Grigio Ch. (foto)



Cuoio (foto)



Blu

**EWM247** - MAGLIA GIROCOLLO LANA CASHMERE - Tg. S-M-L-XL

90% lana vergine 10% cashmere

**EWM248** - MAGLIA MANICA BOTTONI LANA CASHMERE - Tg. S-M-L-XL

90% lana vergine 10% cashmere

LANA  
CASHMERE

LANA  
CASHMERE

OVERSIZE

OVERSIZE



Sale (foto)



Grigio Ch.



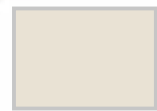
Renna



Caffè



Nero



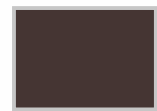
Sale (foto)



Grigio Ch.



Renna



Caffè



Nero

8

9

**EWM249** - MAGLIA SCOLLO "V" LANA CASHMERE - Tg. S-M-L-XL

90% lana vergine 10% cashmere

**EWM255** - MAGLIA DOLCEVITA SCATOLETTA LANA CASHMERE - Tg. S-M-L-XL

90% lana vergine 10% cashmere

LANA  
CASHMERE



Grigio medio (foto)



Renna



Blu



Nero

10

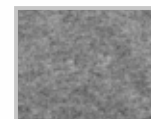
**EWM250** - PANTALONE TASCHE LANA CASHMERE - Tg. XS-S-M-L-XL

90% lana vergine 10% cashmere

LANA  
CASHMERE



11



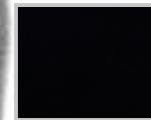
Grigio medio (foto)



Renna



Blu



Nero

**EWM253** - MAGLIA CAPPUCCIO LANA CASHMERE - Tg. XS-S-M-L-XL

90% lana vergine 10% cashmere

LANA  
CASHMERE

LANA  
CASHMERE



12

13



Grigio medio (foto)



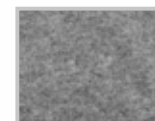
Renna



Blu



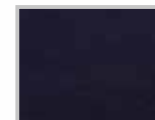
Nero



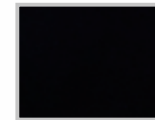
Grigio medio (foto)



Renna



Blu



Nero

**EWM251** - PANTALONE PALAZZO LANA CASHMERE - Tg. XS-S-M-L-XL

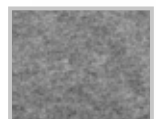
90% lana vergine 10% cashmere

**EWM252** - MAGLIA LUPETTO LANA CASHMERE - Tg. XS-S-M-L-XL

90% lana vergine 10% cashmere



LANA  
CASHMERE



Grigio medio



Renna



Blu



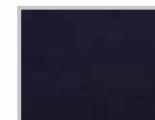
Nero (foto)

14

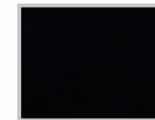
15



Antracite (foto)



Blu



Nero

**EWM254** - CARDIGAN LANA CASHMERE - Tg. S-M-L-XL

90% lana vergine 10% cashmere

**EWM256** - CAPPOTTO PUNTO STOFFA - Tg. S-M-L-XL

35% poliammide 30% lana 30% viscosa 5 % cashmere



PURA LANA



LANA GATTO



16

PURA LANA



LANA GATTO



17



Rosso 626



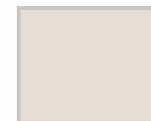
Blu 440



Nero

**EWM191** - ABITO LANA PARIGI - Tg. S-M-L-XL

100% pura lana



Stucco 005



Ribes 344 (foto)



Pavone 503



Blu 440



Nero

**EWM214** - MAGLIA GIROCOLLO LINKS - Tg. S-M-L-XL-XXL

100% pura lana

PURA LANA

PURA LANA



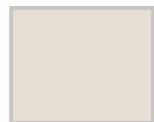
LANA GATTO

LANA GATTO



18

19



Stucco 005



Ribes 344



Pavone 503 (foto)



Blu 440



Nero



Stucco 005



Ribes 344



Pavone 503



Blu 440 (foto)



Nero

**EWM215** - MAGLIA DOLCEVITA LINKS - Tg. S-M-L-XL-XXL

100% pura lana

**EWM216** - GIACCHINA LINKS - Tg. S-M-L-XL-XXL

100% pura lana

PURA LANA

PURA LANA



LANA GATTO

LANA GATTO



Ecrù 020



Rosa 300 (foto)



Anice 415



Coccio 601



Verde Gucci 502



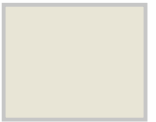
Nero



20

**EWM217** - MAGLIA GIROCOLLO FASCE COSTE - Tg. S-M-L-XL-XXL

100% pura lana



Ecrù 020 (foto)



Rosa 300



Anice 415



Coccio 601



Verde Gucci 502



Nero



21

**EWM218** - MAGLIA GIROCOLLO TASCHINA FASCE COSTE - Tg. S-M-L-XL-XXL

100% pura lana

PURA LANA



LANA GATTO



LANA  
VISCOSA  
CASHMERE



22



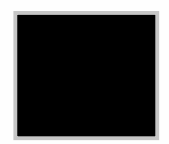
23



Ecrù 020



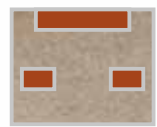
Verde Gucci 502 (foto)



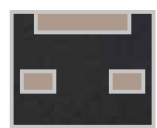
Nero



Azzurro (foto)



Beige



Antracite

**EWM219** - GIACCHINA FASCE COSTE - Tg. S-M-L-XL-XXL

100% pura lana

**EWM222** - MAGLIA GIROCOLLO TASCHE BICOLOR - Tg. S-M-L-XL-XXL

45% lana 30% viscosa 25% cashmere

LANA  
VISCOSA  
CASHMERE



24



Azzurro



Beige



Antracite (foto)

**EWM223** - MAGLIA DOLCEVITA BICOLOR - Tg. S-M-L-XL-XXL

45% lana 30% viscosa 25% cashmere

LANA  
VISCOSA  
CASHMERE



25



Azzurro



Beige (foto)



Antracite

**EWM224** - MAGLIA COREANA TASCHE BICOLOR - Tg. S-M-L-XL-XXL

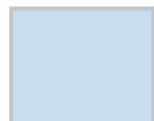
45% lana 30% viscosa 25% cashmere

LANA  
VISCOSA  
CASHMERE

PUNTO  
PANNOCCHIA



26



Azzurro 400



Perla 701 (foto)



Beige 110



Curcuma 608

**EWM221** - MAGLIA DOLCEVITA PUNTO PANNOCCHIA - Tg. S-M-L-XL-XXL

45% lana 30% viscosa 25% cashmere

LANA  
VISCOSA  
CASHMERE

PUNTO  
PANNOCCHIA



27



Azzurro 400 (foto)



Perla 701



Beige 110

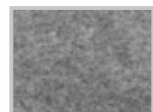


Curcuma 608

**EWM220** - MAGLIA GIROCOLLO PUNTO PANNOCCHIA - Tg. S-M-L-XL-XXL

45% lana 30% viscosa 25% cashmere

100% CASHMERE



Grigio Medio



Cipria



Renna



Acqua



Rosso (foto)



Blu



Nero



28

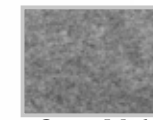
**EWM161** - MAGLIA GIROCOLLO SORRISO - Tg. S-M-L-XL

100% cashmere

100% CASHMERE



Grigio Ch.



Grigio Medio



Caffè



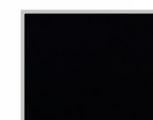
Renna (foto)



Rosso



Blu



Nero



29

**EWM162** - MAGLIA LUPETTO M/L - Tg. S-M-L-XL

100% cashmere



100% CASHMERE



Grigio Chiaro (foto)



Grigio Medio



Rosso



Cipria



Renna



Castagna



Blu



Nero



30

**EWM163** - MAGLIA DOLCEVITA M/L - Tg. S-M-L-XL

100% cashmere

DOLBY  
YARN



31



Calce (foto)



Perla



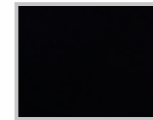
Cammello



Coccio



Caffè



Nero

**EWM206** - MAGLIA DOLBY SCATOLETTA - Tg. S-M-L

62% viscosa 30% poliammide 8% angora

DOLBY  
YARN

DOLBY  
YARN



Calce



Beige



Perla



Zucca (foto)



Pavone



Nero



32

33



Calce



Perla



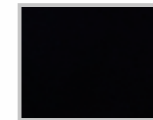
Beige



Coccio (foto)



Pavone



Nero

**EWM207** - MAGLIA DOLBY FRANGE - Tg. S-M-L

62% viscosa 30% poliammide 8% angora

**EWM208** - MAGLIA DOLBY MANICA FRANGE - Tg. S-M-L

62% viscosa 30% poliammide 8% angora

DOLBY  
YARN

DOLBY  
YARN



34

35



Perla



Cammello



Bruciato (foto)



Pavone



Nero



Perla



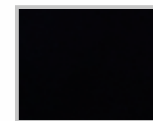
Cammello (foto)



Pavone



Bruciato



Nero

**EWM209** - GIACCHINA DOLBY SCOTT RILIEV - Tg. S-M-L

62% viscosa 30% poliammide 8% angora

**EWM210** - MAGLIA DOLBY SCOTT RILIEV - Tg. S-M-L

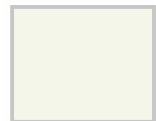
62% viscosa 30% poliammide 8% angora

DOLBY  
YARN

DOLBY  
YARN



Perla



Calce



Nuvola



Ribes (foto)



Bruciato



Caffè



Nero



36

37



Perla



Calce



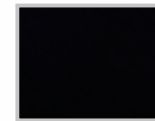
Beige



Ribes



Bruciato (foto)



Nero

**EWM211** - MAGLIA DOLBY TASCHINA - Tg. S-M-L

62% viscosa 30% poliammide 8% angora

**EWM230** - MAGLIA DOLCEVITA DOLBY - Tg. S-M-L

62% viscosa 30% poliammide 8% angora

DOLBY  
YARN

DOLBY  
YARN



38

39



Calce



Nuvola (foto)



Perla



Rosa

**EWM225** - MAGLIA STAMPA - Tg. S-M-L

62% viscosa 30% poliammide 8% angora



Calce



Nuvola



Perla



Rosa (foto)

**EWM226** - MAGLIA OVER STAMPA - Tg. S-M-L

62% viscosa 30% poliammide 8% angora

**DOLBY  
YARN**

**DOLBY  
YARN**

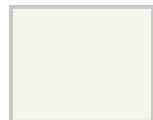


**40**

**41**



Perla



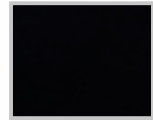
Calce



Beige



Pavone (foto)



Nero



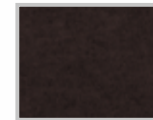
Perla



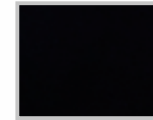
Nuvola



Zucca (foto)



Caffè



Nero

**EWM232** - MAGLIA M/L DOLBY TASCHINE - Tg. S-M-L

62% viscosa 30% poliammide 8% angora

**EWM233** - MAGLIA M/L DOLBY SCAT. BOTT. MANICA - Tg. S-M-L

62% viscosa 30% poliammide 8% angora

DOLBY  
YARN

DOLBY  
YARN



Perla



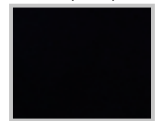
Calce



Beige



Ribes (foto)



Nero



42

43



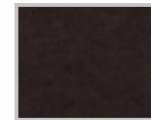
Calce (foto)



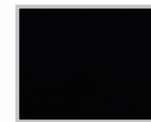
Perla



Pavone



Caffè



Nero

**EWM234** - MAGLIA M/L DOLBY SCAT. BOTT. LATERALE - Tg. S-M-L

62% viscosa 30% poliammide 8% angora

**EWM235** - MAGLIA M/L DOLBY SCATOLETTA - Tg. S-M-L

62% viscosa 30% poliammide 8% angora

DOLBY  
YARN

DOLBY  
YARN



44

45



Perla



Calce



Rosa



Nuvola (foto)



Caffè



Perla



Calce



Beige



Ribes (foto)



Zucca

**EWM236** - MAGLIA M/L DOLBY LUPETTO TRECCE - Tg. S-M-L

62% viscosa 30% poliammide 8% angora

**EWM237** - MAGLIA M/L DOLBY TRECCE - Tg. S-M-L

62% viscosa 30% poliammide 8% angora



DOLBY  
YARN

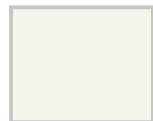
DOLBY  
YARN



46



Perla



Calce (foto)



Caffè



Nero

**EWM238** - SPOLVERINO DOLBY - Tg. S-M-L

62% viscosa 30% poliammide 8% angora



47



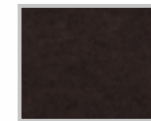
Calce



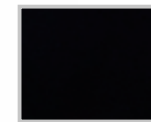
Zucca



Pavone (foto)



Caffè



Nero

**EWM244** - MAGLIA MAN. 3/4 DOLBY ASSIM. LUPETTO - Tg. (S/M) (L/XL)

62% viscosa 30% poliammide 8% angora



DOLBY  
YARN

48



DOLBY  
YARN

49



Perla



Beige (foto)



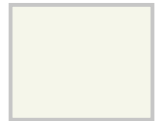
Nuvola



Ribes



Nero



Calce



Beige



Perla



Caffè (foto)



Nero

**EWM245** - MAGLIA MAN. 3/4 DOLBY ASSIM. - Tg. (S/M) (L/XL)

62% viscosa 30% poliammide 8% angora

**EWM239** - ABITO M/L DOLBY TRECCIE DOLCEVITA - Tg. S-M-L

62% viscosa 30% poliammide 8% angora

DOLBY  
YARN

DOLBY  
YARN

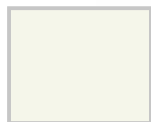


50

51



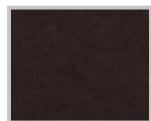
Perla



Calce (foto)



Beige



Caffè



Nero



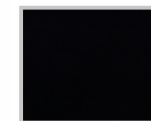
Calce



Beige



Perla (foto)



Nero

**EWM240** - ABITO M/L DOLBY DOLVCEVITA - Tg. S-M-L

62% viscosa 30% poliammide 8% angora

**EWM241** - ABITO M/L DOLBY COSTINE - Tg. S-M-L

62% viscosa 30% poliammide 8% angora



DOLBY  
YARN

DOLBY  
YARN

52

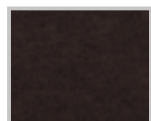
53



Perla



Beige



Caffè (foto)



Nero



Perla



Beige



Caffè (foto)



Nero

**EWM242** - CARDIGAN OVER DOLBY TASCHE - Tg. (S/M) (L/XL)

62% viscosa 30% poliammide 8% angora

**EWM243** - CARDIGAN LONG DOLBY TASCHE - Tg. (S/M) (L/XL)

62% viscosa 30% poliammide 8% angora

**DOLBY  
YARN**



**54**

**55**



Calce (foto)



Beige



Caffè



Blu



Nero

**EWM257** - CARDIGAN DOLBY LINKS - Tg. S-M-L  
62% viscosa 30% poliammide 8% angora



Beige



Amaranto (foto)



Nero

**EWM231** - MAGLIA M/L POIS MOHAIR - Tg. S-M-L  
40% acrilico 30% mohair 30% poliammide



56

57



Perla



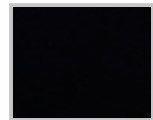
Calce



Cammello



Coccio (foto)



Nero



Calce



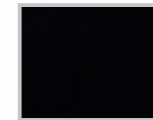
Perla



Laguna (foto)



Coccio



Nero

**EWM227** - MAGLIA M/L MACUMBA CATENA - Tg. S-M-L

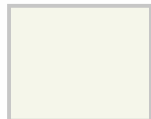
60% acrilico 14% poliammide 10% poliestere 8% lana 8% viscosa

**EWM228** - MAGLIA M/L MACUMBA LUPETTO - Tg. S-M-L

60% acrilico 14% poliammide 10% poliestere 8% lana 8% viscosa



Perla



Calce



Cammello (foto)



Laguna



Nero



**58**

**59**



Latte



Acido (foto)



Rosso



Ruggine



Nero

**EWM229** - MAGLIA M/M MACUMBA LUPETTO - Tg. S-M-L

60% acrilico 14% poliammide 10% poliestere 8% lana 8% viscosa

**EWM198** - MAGLIA SORRISO - Tg. (S/M) (L/XL)

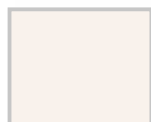
54% viscosa 24% lana 22% poliammide

OVERSIZE

VISCOZA LANA



60



Latte



Acido (foto)



Rosso



Ruggine



Nero



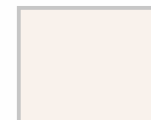
**EWM199** - MAGLIA OVER DOLCEVITA - Tg. (S/M) (L/XL)

54% viscosa 24% lana 22% poliammide

VISCOZA LANA

61

OVERSIZE



Latte



Rosso



Ruggine (foto)



Nero



**EWM200** - MAGLIA OVER COLLO V - Tg. (S/M) (L/XL)

54% viscosa 24% lana 22% poliammide



COMO  dress made in italy

MAGLIERIA  
CALATA



AI 2021

PURA LANA

PURA LANA

LANA GATTO

LANA GATTO



Stucco 005



Ribes 344



Pavone 503 (foto)



Blu 440



Nero



64

65



Verde Gucci 502



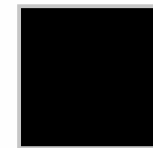
Ribes 344



Anice 415 (foto)



Blu 440



Nero



**CDC26** - MAGLIA OVER GIROCOLLO - Tg. M L XL XXL

100% lana vergine

**CDC28** - MAGLIA BOTTONI GIROCOLLO - Tg. M L XL XXL

100% lana vergine

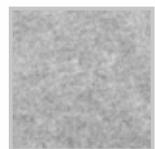
LANA  
VISCOSA  
CASHMERE

LANA  
VISCOSA  
CASHMERE

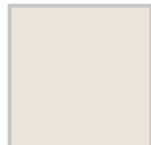


66

67



Perla 701



Ecrù 020 (foto)



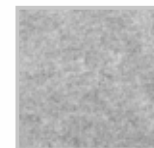
Curcuma



Blu 440

**CDC30** - MAGLIA LINKS - Tg. M L XL XXL

45% lana 30% viscosa 25% cashmere



Perla 701



Curcuma foto)



Blu 440



Nero

**CDC31** - GIACCHINA LINKS - Tg. M L XL XXL

45% lana 30% viscosa 25% cashmere

LANA  
CASHMERE

OVERSIZE



Grigio Ch.



Sale



Renna (foto)



Fuoco



Nero



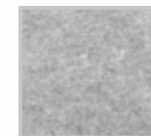
68

**CDC32** - MAGLIA OVERSIZE DOLCEVITA LANA CASH. - Tg. S M L XL

90% lana vergine 10% cashmere

LANA  
CASHMERE

OVERSIZE



Grigio Ch.



Sale



Renna



Bosco (foto)



Blu



Nero



69

**CDC33** - MAGLIA COLLO BARCA LANA CASH. - Tg. S M L XL

90% lana vergine 10% cashmere



**EVOE**  
made in italy 

**MAGLIERIA  
FASHION**

**FASHION  
MADE IN ITALY**  


**PUNTO STOFFA**

**EVOE**  
made in italy 

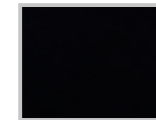
**71**



Grigio M.



Blu



Nero (foto)

**EWF14** - PANTALONE MAGLIA PUNTO STOFFA - Tg. **S-M-L-XL**

56% acrilico 19% viscosa 19% lana 5% poliammide 1% elastan



72

73



**EWF01** - CARDIGAN JACQUARD ETHNIC - Tg. S-M-L

50% viscosa 25% poliestere 25% poliammide

**EWF02** - MAGLIA JACQUARD ETHNIC - Tg. S-M-L

50% viscosa 25% poliestere 25% poliammide



74

75



**EWF03** - MAGLIA JACQUARD MACULATO - Tg. S-M-L-XL

46% acrilico 31% viscosa 15% lana 6% poliammide 2% lino

**EWF04** - CARDIGAN JACQUARD MACULATO - Tg. S-M-L-XL

46% acrilico 31% viscosa 15% lana 6% poliammide 2% lino



76

77



**EWF05** - MAGLIA JACQUARD ARABESCO - Tg. S-M-L-XL

38% acrilico 33% poliammide 29% mohair

**EWF06** - CAPPOTTO JACQUARD ARABESCO - Tg. S-M-L-XL

37% acrilico 33% poliammide 30% mohair





FASHION  
MADE IN ITALY

78

FASHION  
MADE IN ITALY

79



**EWF10** - MAGLIA JACQUARD CATENE - Tg. **S-M-L**

40% acrilico 22% poliammide 16% viscosa 11% mohair 6% poliestere 5% lana

**EWF11** - MANTELLA JACQUARD CATENE - Tg. **UNICA**

37% acrilico 22% poliammide 18% viscosa 13% mohair 7% poliestere 3% lana

# EVOE

EVOE



Antracite M.

Beige M.

Blu



Bordeaux

Grigio M.

Nero

Rosso

**EAC11** Guanto Lana Basic  
70% lana - 20% poliammide - 10% acrilico  
TG. UNICA

vendita minima 3 pz. per colore



Antracite M.

Blu



Grigio M.

Nero

**EAC12** Guanto Lana Mezze Dita  
70% lana - 20% poliammide - 10% acrilico  
TG. UNICA

vendita minima 2 pz. per colore

**ACCESSORI  
AI 2021**



**EAC22** Guanto Antipioggia  
 Esterno 100% poliammide - Interno 100% poliestere  
 TG. S M **vendita minima 3 pz. per colore (1S-2M)**



**EAC47** Cappello Antipioggia Trap.  
 100% poliammide TS. 100% poliestere  
 TG. UNICA **vendita minima 2 pz. per colore**



**EAC23** Cappello Antipioggia  
 Esterno 100% poliammide - Interno 100% poliestere  
 TG. UNICA **vendita minima 3 pz. per colore**



**EAC51** Guanto Basic Pile Bielastico  
 95% poliestere 5% elastam  
 TG. UNICA **vendita minima 3 pz. per colore**



Nero

Grigio

Beige

**EAC57** Cappello pon Pon Ecopel.  
55% poliestere 15% acrilico 15% mohair 15% lana TS. 100 % poliestere  
TG. UNICA

**vendita minima 1 pz. per colore**



Beige

**EAC62** Guanto Animalier  
95% Poliestere 5% Elastam  
TG. UNICA

**vendita minima 3 pz.**



Cipria

Blu

Grigio

Nero

Verde Oliva

**vendita minima 2 pz. per colore**



**EAC67** Cappello Baseball Velluto Coste  
85% Poliestere 15% Poliammide TS.65% Poliestere 35% Cotone  
TG. UNICA



Nero

**EAC63** Collo Double Animalier  
95% Acrilico 5% Elastam TS. 95% poliestere 5% elastam  
TG. UNICA

**vendita minima 3 pz.**



Nero

**EAC64** Capello Double Animalier  
95% Acrilico 5% Elastam TS. 95% Poliestere 5% Elastam  
TG. UNICA

vendita minima 3 pz.



Nero



Panna

**EAC69** Guanto Thermo Dolomiti Lux  
97% Acrilico 2% Poliam. 1% Elast. Fodera 100% Polietere  
TG. UNICA

vendita minima 3 pz.  
Conf. assortita (2 pz. nero 1 pz. panna)



Nero

**EAC61** Guanto Bordo Animalier  
95% acrilico 5% elastam - Polso 95% poliestere 5% elastam  
TG. UNICA

vendita minima 3 pz.



Ghiaccio



Grigio



Nero

**EAC73** Fascia Glamour Ecopelliccia  
100% Poliestere  
TG. UNICA

vendita minima 2 pz. per colore



**EAC77** Sciarpa Filato Tuch  
70% Acrilico 20% Poliammide 10% Fibra Metal  
TG. UNICA

vendita minima 2 pz. per colore



**EAC85** Sciarpina (60X160) Lurex Frange  
45% Poliestere 45% Viscosa 10% Fibra Metallica  
TG. UNICA

vendita minima 2 pz. per colore



**EAC78** Cappello Filato Tuch Pon/Pon  
70% Acrilico 20% Poliammide 10% Fibra Metal  
TG. UNICA

vendita minima 2 pz. per colore



Nero



Fango

**EAC91** Guanto Ecopelle  
Palmo 84% Poliammide 16% elastam Dorso 72% Poliestere 25% poliuretano 3% Elastam  
TG. UNICA

vendita minima 3 pz.



Nero



Brown

**EAC92** Guanto Nylon Flocc Animalier  
100% Poliammide Fodera 100% Poliestere  
TG. S - M

**vendita minima 3 pz. per colore  
(1 S, 2M)**



Nero



Verdone



Cammello



Dark Grey



Rosso



Off White



Beige

**EAC97** Basco Lana T.U.  
100% Lana  
TG. UNICA

**vendita minima 2 pz. per colore**



Nero



Brown

**EAC93** Cappello Nylon Flocc Animalier  
100% Poliammide Fodera 100% Poliestere  
TG. UNICA

**vendita minima 3 pz. per colore**



Nero



Cammello



Grey

**EAC98** Guanto Scamosciato Bordo Ecopelle  
100% Poliestere  
TG. UNICA

**vendita minima 3 pz. per colore**



Nero

Grigio

Particolare

**vendita minima 3 pz.  
(assortiti 2 Nero - 1 Grigio)**

**EAC99** Doppio Guanto Con Manicotto Lurex  
Guanto: 57% Poliest. 16% Lana 11% Viscosa 9% Acr. 5% Poliam. 2% Elast.  
Manicotto: 60% Poliest. 16% Lana 8% Viscosa 9% Acr. 5% Poliam. 1% Elast. 1 Fibra Met.  
TG. UNICA



Blu

Piombo

Fango

Rosso

Pietra

**vendita minima 2 pz. per colore**

**EAC103** Collo Reversibile Ecopelliccia  
100% Poliestere  
TG. UNICA



Nero

Grigio

Pink

**vendita minima 2 pz. per colore**

**EAC115** Stola Paillettes  
100% Acrilico  
TG. UNICA



Nero

**EAC104** Guanto Senza Dita Ecopelliccia  
100% Poliestere Palma 80% Poliestere 20% Cotone Polso 100% Poliestere  
TG. UNICA **vendita minima 3 pz. per colore**





Cammello



Maculato



Marrone

vendita minima 3 pz. per colore  
(2 S, 1M)

**EAC105** Guanto Ecopelle Orsetto  
100% Polieuretano Fodera 100% poliestere Polso 100% Poliestere  
TG. S - M



Cammello



Maculato



Marrone

**EAC107** Borsa Ecopelle Prof. Orsetto (37x14x34 cm)  
100% Polieuretano Fodera 100% poliestere Manici 100% Poliestere  
TG. UNICA

vendita minima 1 pz. per colore



Cammello



Maculato



Marrone



Retro

vendita minima 2 pz. per colore

**EAC106** Cappello Baseball Ecopelle Orsetto  
100% Polieuretano Fodera 100% Poliestere  
TG. UNICA



Fango



Nero

vendita minima 3 pz. per colore

**EAC108** Cappello Buket Nylon Lurex  
100% Poliammide Fodera 100% Poliestere  
TG. UNICA



Beige



Nero



Off White

vendita minima 3 pz. per colore

**EAC113** Cuffia Soft Lux  
60% Poliammide 40% Lurex

TG. UNICA



Nero



Fango

vendita minima 1 pz. per colore

**EAC109** Borsa Nylon Lurex (40x16x35 cm)  
100% Poliammide Fodera 100% poliestere

TG. UNICA



Nero



Beige



Off White

vendita minima 2 pz. per colore

**EAC114** Collo Soft Lux  
60% Poliammide 40% Lurex

TG. UNICA



Nero



Fango

vendita minima 3 pz. per colore  
(2 S, 1M)

**EAC110** Guanto Nylon Lurex  
100% Poliammide Fodera 100% Poliestere Manico 100% Poliestere

TG. S - M



Nero



Panna

**EAC111** Cuffia Soft Pon-Pon Jacquard Lurex  
100% Poliestere  
TG. UNICA

vendita minima 3 pz. per colore



Nero



Bordeaux



Fango

**EAC116** Berrettone Velluto  
100% Cotone Fodera 100% Poliestere  
TG. UNICA

vendita minima 2 pz. per colore



Nero



Panna

**EAC112** Sciarpa Soft Jacquard Lurex (30x160)  
100% Poliestere  
TG. UNICA

vendita minima 2 pz. per colore



Grigio



Marrone



Nero

**EAC117** Guanto Pile Bicolore  
100% Poliestere  
TG. UNICA

vendita minima 2 pz. per colore



Grigio



Nero

**EAC118** Guanto Felpa Borchie  
50% Cotone 45% Poliestere 5% Elastam  
TG. UNICA

vendita minima 3 pz. per colore



Grigio



Nero

**EAC120** Cuffia Felpa Borchie  
50% Cotone 45% Poliestere 5% Elastam  
TG. UNICA

vendita minima 3 pz. per colore



Grigio



Nero

**EAC119** Collo Felap Borchie (24x25 cm)  
50% Cotone 45% Poliestere 5% Elastam  
TG. UNICA

vendita minima 3 pz. per colore



Antracite



Blu

**EAC121** Berrettone Bouclé  
41% Mohair 22% Poliest. 18% Lana 17% Acrilico 2% Alpaca Fodera 100% Poliestere Bordo 70% Lana 30% Poliestere  
TG. UNICA

vendita minima 1 pz. per colore



Nero

vendita minima 1 pz. per colore

**EAC122**

Cloche Pied Poule

100% Acrilico Fodera 100% Poliestere Bordo 83% Poliestere 15% Viscosa 2% Elastam

TG. UNICA



Grigio



Nero



Panna

**EAC124**

Cuffia Turbante Mohair

100% Acrilico Pon-Pon 100% Midacril

TG. UNICA

vendita minima 2 pz. per colore



Nero



Grigio



Rosso

vendita minima 2 pz. per colore

**EAC123**

Fascia Lana

42% Acrilico 30% Poliestere 14% Mohair 14% Lana

TG. UNICA



Nero



Grigio



Pink



Nero



Grigio



Pink

**EAC125**

Cuffia Maglia Costa Ingl. Lux

80% Acrilico 20% Lurex Pon Pon 80% Acrilico 20% Lurex

TG. UNICA

vendita minima 2 pz. per colore

**EAC126**

Collo Maglia Coste InglLux (28x65 cm)

80% Acrilico 20% Lurex

TG. UNICA



Bianco/Nero

**EAC130** Sciarpa Scozzese Bicolor (80x180 cm)  
80% Acrilico 20% Lurex  
TG. UNICA

vendita minima 2 pz. per colore



Azzurro



Cammello



Malva



Nero



Panna

**EAC128** Sciarpa Maglia Tramata (50x180 cm)  
100% Acrilico  
TG. UNICA

vendita minima 2 pz. per colore



Blu



Cammello



Rosso

**EAC127** Stola Animalier (70x190 cm)  
50% Acrilico 38% Modal 8% Lana 4% Alpaca  
TG. UNICA

vendita minima 2 pz. per colore



Bordeaux



Nero



Senape

**EAC129** Sciarpa Righe Color (35x190 cm)  
100% Poliestre  
TG. UNICA

vendita minima 2 pz. per colore

tessil**group** s.r.l.

Via C.Colombo, 3  
22069 ROVELLASCA  
tel. 02 96740138  
fax 02 96740070  
info@tessilgroup.it  
www.tessilgroup.it